

INVO SMART LED Linear High Bay

Utilising the latest in LED technology, our INVO range of LED High bay lights offer superb energy efficiency, combined with high lumen outputs that allow effective replacement of 250 watt and 400 watt metal halide luminaires. The INVO SMART LED Linear High bay also has interchangeable lens, providing accurate distribution of light, and ensuring minimal wastage and energy consumption, available in 60, 90 or 120 degree spread.



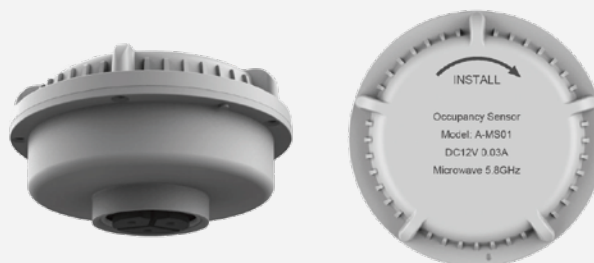
- > Massive 185 lumen per watt output
- > Ideal replacement for Metal halide and Fluorescent lighting
- > Compact design
- > Hot swap sensor and adjustable CCT (3000/4000/5000K)
- > Optional daylight harvesting modules available



Sensors

You can install your luminaires today and mount sensors or IOT controllers whenever you need, without any hassle

- > 3 seconds easy plug-in scalability
- > No re-circuiting or new control wiring
- > Provide interfaces for follow-up system expansion, escalation



On/off control



Stand-by period



Detection area



Stand-by dimming level



Hold time



Remote control setting



Daylight sensor

For more information, or to book your FREE audit,
call us on 01522 538212, email info@procuredirect.co.uk
or visit us at www.procuredirect.co.uk

On/Off and dimming functions (For maximum energy saving)

1. ON/OFF Function (stand-by period set at '0')



1 With **sufficient** ambient light, the light will not be switched on, even with motion signal

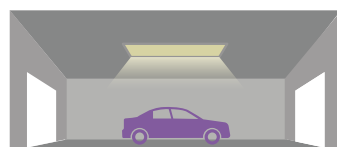


2 With **insufficient** ambient light, the sensor switches on the light when motion is detected.



3 After **hold time** has lapsed, the sensor switched off the light when no motion is detected.

2. 2-Step dimming function (stand-by period set at "+∞")



1 If there is **no motion** detected, the light will remain **low-level** all the time.



2 When **motion** is detected, the sensor will switch on the light to **full brightness**.



3 After **hold time** has lapsed, the sensor dims the light to the set low-level light if **no detected motion**.

3. 3-Step dimming function (stand-by period set at '5-min' or '15-min')



1 With **sufficient** ambient light, the light will not be switched on, even with motion signal.



2 With **insufficient** ambient light, the sensor switches on the light when motion is detected.



3 After **hold time** has lapsed, the sensor dims the light to the set low-level light if **no new detected motion**.



4 After **stand by period** has lapsed, the sensor switched off the light when no motion is detected.

CCT & power – adjustable (8 wattage and 3 CCT choices)

Desired Wattage / DIP Switch Settings

Model	Desired Wattage	DIP Dwitch Settings			
		1	2	3	4
SHB100-200	100W	ON	OFF	OFF	OFF
	120W	OFF	ON	OFF	OFF
	150W	OFF	OFF	ON	OFF
	200W	OFF	OFF	OFF	ON
SHB200-400	220W	ON	OFF	OFF	OFF
	240W	OFF	ON	OFF	OFF
	300W	OFF	OFF	ON	OFF
	400W	OFF	OFF	OFF	ON

Desired CCT / DIP Switch Settings

Desired CCT	DIP Dwitch Settings		
	–	0	–
3000K	ON	OFF	OFF
4000K	OFF	ON	OFF
5000K	OFF	OFF	ON



For more information, or to book your FREE audit,
call us on 01522 538212, email info@procuredirect.co.uk
or visit us at www.procuredirect.co.uk